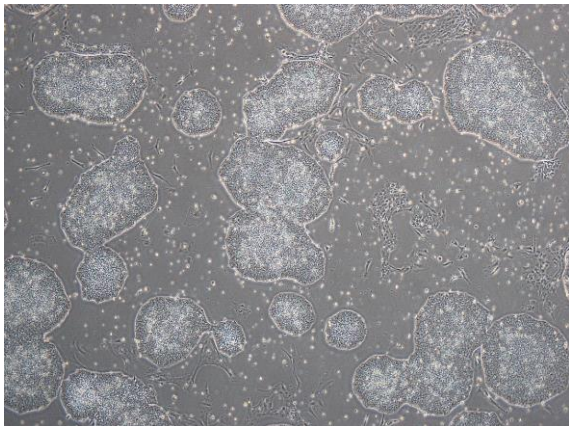
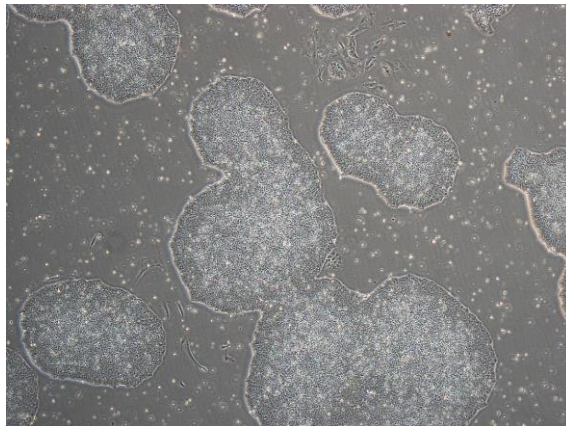


【 CiRA-j-1007 】 Morphology of iPSC colonies

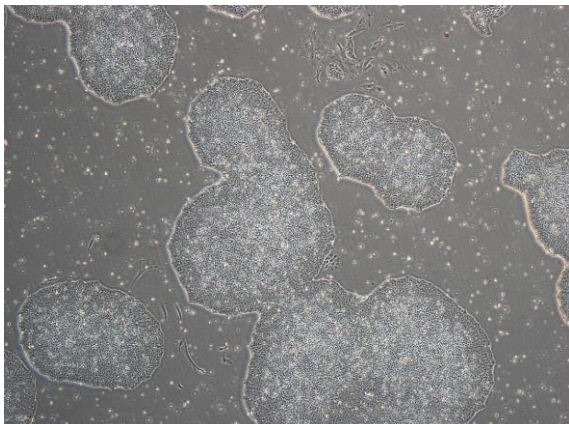
CiRA-j-1007-A: passage-2



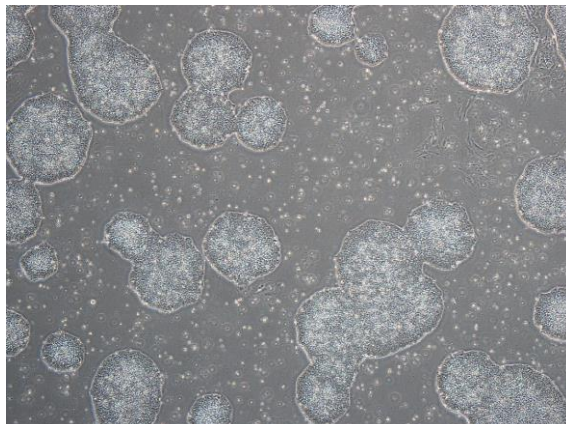
CiRA-j-1007-B: passage-2



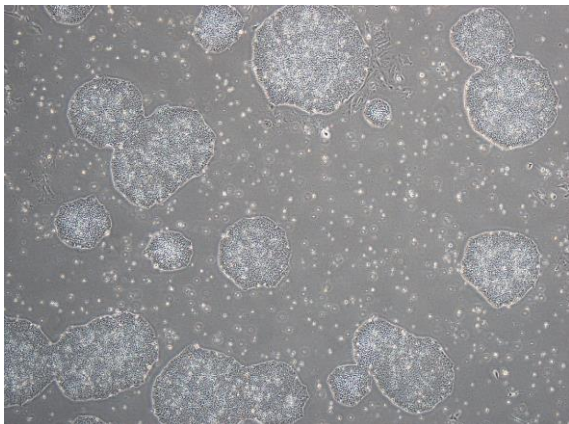
CiRA-j-1007-C: passage-2



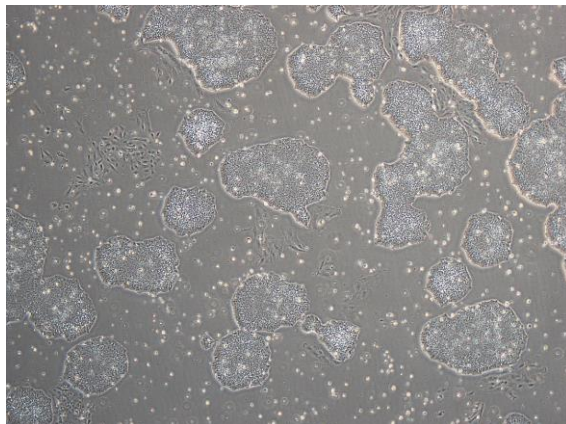
CiRA-j-1007-D: passage-2



CiRA-j-1007-E: passage-2



CiRA-j-1007-F: passage-2



(All images were captured at 4x magnification)